

NOM, PRÉNOM :

U. V. HARMO. 1999 / 2000

ECRIRE UNE GRILLE SOUS CE THÈME

Handwritten musical score for piano, first system. The key signature is one sharp (F#) and the time signature is 4/4. The tempo is marked "♩ = 200". The score consists of a treble and bass staff. The treble staff contains a melody starting with a quarter note, followed by eighth and sixteenth notes, and ending with a dotted quarter note. The bass staff contains whole rests.

Handwritten musical score for piano, second system. The treble staff continues the melody with a triplet of eighth notes marked with a bracket and the number "1". The bass staff contains whole rests.

Handwritten musical score for piano, third system. The treble staff features a triplet of eighth notes marked with a bracket and the number "2". The system concludes with a triplet of eighth notes marked with a bracket and the number "3". The bass staff contains whole rests.

Handwritten musical score for piano, fourth system. The treble staff continues with eighth and sixteenth notes. The bass staff contains whole rests.

Handwritten musical score for piano, fifth system. The treble staff features a triplet of eighth notes marked with a bracket and the number "3". The bass staff contains whole rests.

Handwritten musical score for piano, sixth system. The treble staff continues the melody with eighth and sixteenth notes. The bass staff contains whole rests.

Handwritten musical score for piano, seventh system. The treble staff concludes the piece with a final note. The bass staff contains whole rests.

NOM, PRÉNOM :

U. V. HARMO.

ECRIRE UNE GRILLE SOUS CE THÈME

*♩ = 200*

Chords: G Maj7, Bb7, Eb7, D7, G Maj7, Bb7, Eb7, D7, G Maj7, G7, C7, F7, Bm7(b5), E+7(b9), Am7, D7(b9), C7, F7, G6, C7, G6, F#(b9), BMaj7, Bm7, E7, AMaj7, Am7, D7, Abm7, Db7, Gm7, C7, F#m7, B7, Am7, D7(b9), G Maj7, Bb7, Eb7, D7, G Maj7, Bb7, Eb7, D7, G7, F7, Eb7, D7sus4, F(add9), F#, G6, D7

U. V. HARMO.

NOM, PRÉNOM :

- HARMONISEZ CETTE GRILLE À 5 SONS -  
(thème lead + basse + 3 sons)

E♭Maj7 C+7 Fm7 B♭7 E♭Maj7 C+7 Fm7 B♭7

E♭Maj7 A♭7 D♭7 C7 F7 B7 B♭7

1 E♭Maj7 A7 A♭Maj7 D♭7 Gm7 A♭Maj7 Gm7(b5) C+7

Fm7 D7(♯9) D♭7 C7 Fm7 C+7 Fm7 B♭7

2 E♭Maj7 A7 A♭Maj7 D7 Gm7 C+7 Fm7 D♭7

E♭Maj7 A♭7 D♭7 C7 B7 B♭7 E♭6 Fm7 B♭7

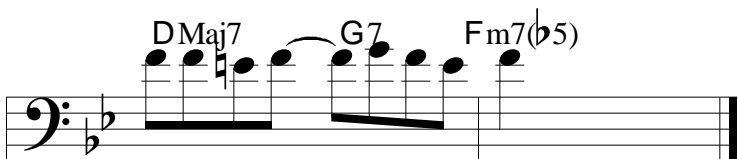
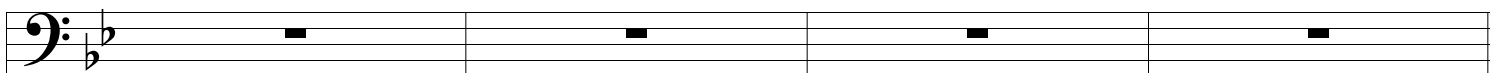
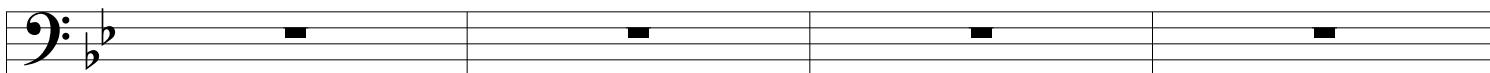
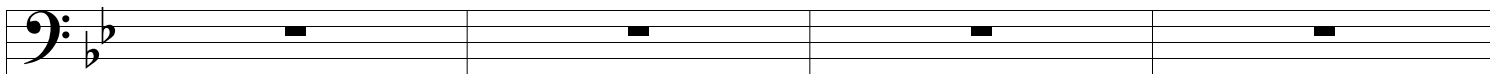
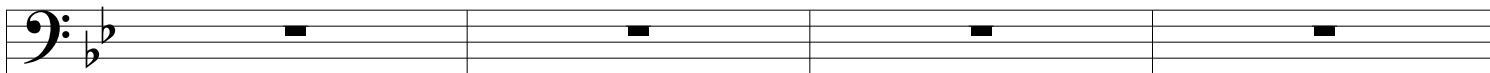
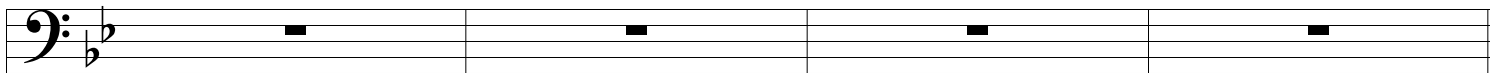
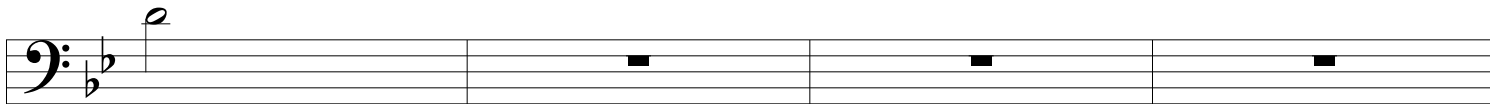
U. V. HARMO.  
RELEVEZ LA GRILLE ET LE SOLO SUR LE CD

D Maj7

NOM, PRÉNOM :



D Maj7



# MASQUERADE IN 3 PARTS

## CARNATION

Carla BLEY - Steve SWALLOW  
GO TOGETHER - 1993 - (WATT/24)

Steve SWALLOW

DMaj7

DMaj7 G7 Fm7(b5) Bb7 Ebm7 A7 Dm7 G7

CbMaj7 Fb7 Ebm7 A7 Fm7 Bb7 G#m7 C7

F#Maj7 Bb7 A#m7(b5) D#7 G#m7 C7 Fm7 Bb7

EBm7 A7 DMaj7 G7 Fm7 Bb7 Ebm7 A7

DMaj7 G7 Fm7(b5) Bb7 Ebm7 A7 Dm7 G7

CbMaj7 Fb7 Ebm7 A7 Fm7 Bb7 G#m7 C7

F#Maj7 Bb7 A#m7(b5) D#7 G#m7 C7 A#m7 D#7

G#Maj7 C7 Bm7 E7 Dm7 G7 Ebm7 A7

DMaj7 G7 Fm7(b5)

NOM, PRÉNOM :

U.V. HARMO.

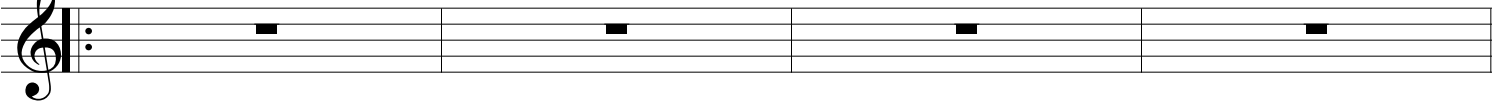
ÉCRIRE UN THÈME SUR LA GRILLE SUIVANTE

C Maj7

D $\flat$  Maj7

C Maj7

B $\flat$ 7

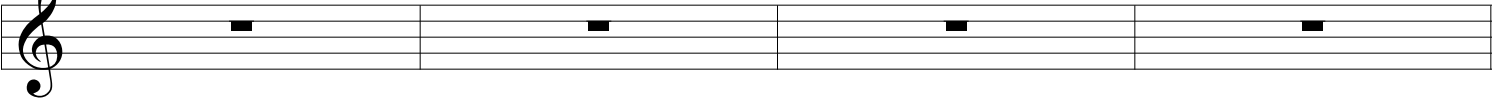


A-7

B $\flat$  Maj7

A-7

F-7    B $\flat$ 7

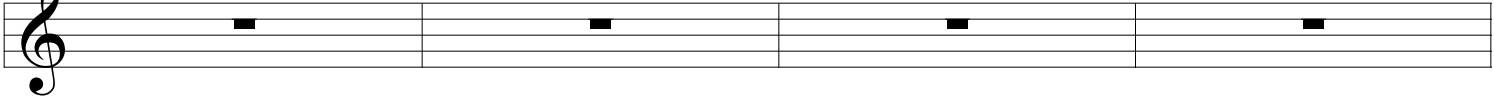


E-7

F Maj7

B-7 $\flat$ 5    E7 $\flat$ 9

A-7



D-7

D $\flat$  Maj7

C-7

D $\flat$  Maj7

